



# ***Dream Mixer*** ***Passive Edition***

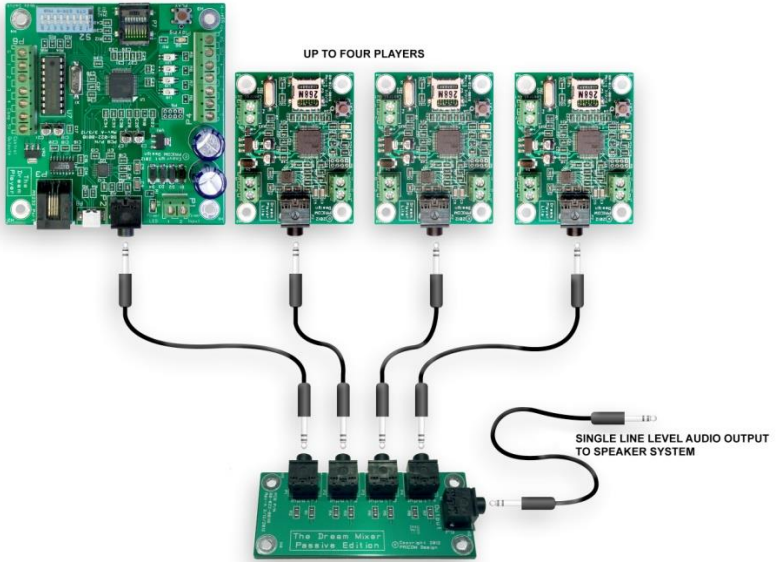
## **Quick Start Guide**

Version 1.0  
Copyright ©2012 PRICOM Design

# 1 Operation

---

Thank you for your purchase of a Dream Mixer-Passive Edition. This is a remarkably simple device and does not require very much reading material or supporting documentation to learn how to operate it. Below is a simple diagram explaining how and where to connect your cables. The illustration displays these connections using one Dream Player MK2, and three Dream Player LITE's.



**USING THE DREAM MIXER (PASIVE EDITION) TO FEED A SINGLE AUDIO SYSTEM**

**Figure 1 - Connection Diagram**



## 2 Connections

---

In order to fully utilize your new Dream Mixer-Passive Edition, simply connect your Dream Player and speaker systems as described below.



Start by connecting an audio patch cable between the output of your audio playback device (i.e. a Dream Player) and the Dream Mixer. This connection is depicted in Figure-1. The four input audio jacks on the Dream Mixer are labeled “Input One”, “Input Two”, “Input Three”, “Input Four” and passively mix into one output. This output connection is identified on the board simply as the “output” jack. The output is designed to feed the signal into a set of powered speakers. Powered speakers are the type commonly used with desktop computers and have their amplifier built-in. Connect your powered speakers to the output jack as depicted in Figure-1.

If you want to use Non-Powered speakers, you can do so by wiring your speakers to a PRICOM Dream AMP or Milli-AMP and then connecting the Audio Output of the AMP to the Output of the Dream Mixer-Passive Edition.



## 3 Support

---

Please refer to the Dream Player User Manual for operating and loading the sound files for the Dream Player onto your SD Flash card.

While the Dream Player is playing, the Control Output associated with the currently playing track will be active.

Using the Dream Mixer creatively can result in tremendous savings in not only cost but space as well. By enabling you to use only one set of speakers, you also have the ability to trigger multiple tracks simultaneously and have them play to one location.

If you are considering a more elaborate application or need additional assistance, don't hesitate to contact us at: [info@pricom.com](mailto:info@pricom.com). We will do our best to help you figure out how to achieve your goals.

You can also visit our web site [www.PRICOM.com](http://www.PRICOM.com) or [www.BobsBench.com](http://www.BobsBench.com) for many interesting applications.

Thank you again for your purchase, and be sure to let us know if we can be of any further assistance!

PRICOM Design  
2755 Slocum Rd  
Peyton, CO 80831  
[www.pricom.com](http://www.pricom.com)  
[info@pricom.com](mailto:info@pricom.com)

